



**PROGRAM EXECUTIVE OFFICE FOR
SIMULATION, TRAINING & INSTRUMENTATION**

Evolving Research, Development and Acquisition Strategies in the Global War on Terror

Roger Smith
Chief Technology Officer
US Army PEO STRI
roger.smith14@us.army.mil

<http://www.peostri.army.mil/CTO>



NDIA Defense Forum
20 march 2009
Orlando, Florida



Soldier-centric Simulation





Left & Right of the Blast



© RAF

Left of the Blast



Combat Simulations

Learn to be successful in battle



Right of the Blast



Medical Simulations

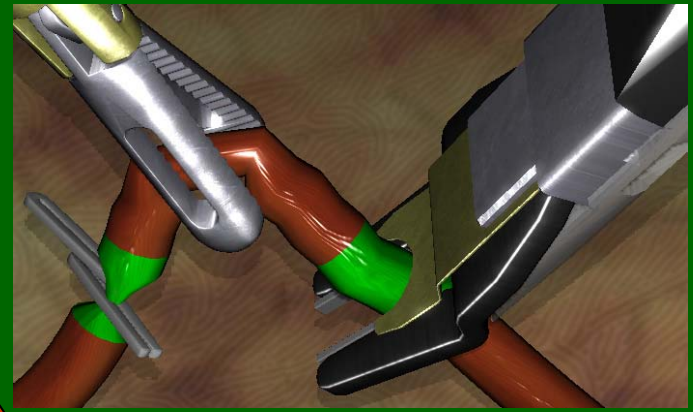
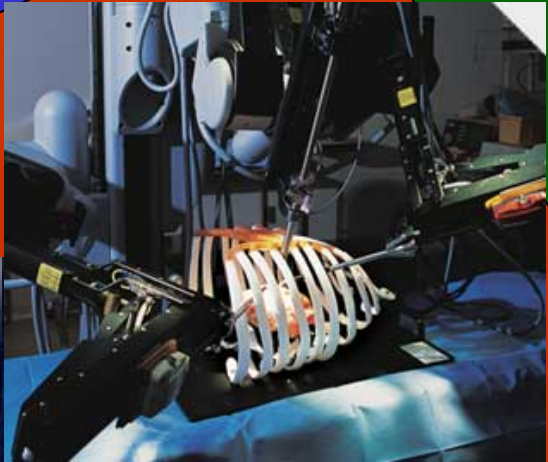
Recovering from the outcome of battle

Cusp of Mortality
For a Young Soldier

CONSTRUCTIVE

VIRTUAL

A	B	C	D	E	F	G	H	I	J	K	L	M	N	O	P	Q	R
1	Status Codes	ED	ICU 2nd flr	L&D	NICU	W&NB	4th Floor	Tele - 5th	Surg - 6th	Med							
2	A- Available	1	A	201	O	301	NIS	3	O	351	A	401	O	501	O	601	O
3	B/A- Assigned	2	O	202	A	302	NIS	2	O	352	A	402	CP	502	O	602	O
4	D/C- Discharge Ord	3	A	203	O	303	NIS	3	O	353	NIS	403	O	503	O	603	O
5	D/L- Likely	4	O	204	O	304	NIS	4	O	354	NIS	404	OK	504	O	604	O
6	D/P- Pending	5	O	205	O	305	O	5	O	355	NIS	405	O	505	A	605	O
7	D/T- Transfer	6	A	206	O	306	O	6	A	356	NIS	406	O	506	A	606	O
8	ES- Cleaning	7	O	207	O	307	CP	7	A	357	A	407	A	507	O	607	O
9	NS- No Staff	8	O	208	A	308	O	8	A	358	A	408	A	508	A	608	O
10	NS- Not in Svc	9	A	209	O	309	A	9	A	359	A	409	O	509	O	609	O
11	PV- Pt V/ating	10	O	210	O	310	O	10	A	360	A	410	O	510	O	610	O
12		11	O	211	NIS	311	A	11	A	361	A	421	O	511	A	611	O
13		12	A			312	A	12	A								
14		13	O			313	O	13	O								
15		14	O			314	A	14	A								
16	O- Occupied	15	O			315	A	15	A								
17	OM- Over Matrix	16	O			316	O										
18	P- Ped	17	O			317	A										
19		18	A			318	A										
20		19	A			319	O										
21		20	A			320	A										
22		21	A			321	A										
23		22	A			322	A										
24	Updated	Hall	O			323	A										
25	1/10/05	Stack	O			324	A										
26	16:56					325	A										
27	Infusion Center	CAH	0			326	A										
28	Legend					327	A										
29	Available	A				328	A										
30	Discharge	OK				329	A										
31	Occupied	O				330	A										
32	Med or Ped					331	A										
33	Bed Census					332	A										
34	% Open	9	45%	2	20%	9	50%	9	44%								
35	% Reserved	0	0%	0	0%	0	0%	0	0%								
36	% Occupied	11	55%	8	40%	7	44%	5	36%								
37	Number of Beds	20		11		20		16									
38	Staffing Adj	5		5		3		3									



LIVE



Conclusion

- Create medical simulations with the same enthusiasm that we previously applied to combat simulation
- Meet soldier needs “to the right of the blast” just as we have always done “to the left of the blast”